

TurnCheck™ Series-10

TurnCheck Series-10 systems are precision optical shaft measuring instruments designed for shop floor environments. Rugged and reliable, TurnCheck Series-10 has a completely telecentric, large field of view optical system that accommodates parts with shaft diameters up to 100 mm. The granite base support for rotary provides a rigid base and isolates vibration.

- **Measure Within Seconds –**
Shaft lengths up to 800 mm.
- **Collimated LED illumination –**
Reduces distortion to provide superior image quality and improved measurement of critical dimensions of all feature types.
- **Shop-Floor Debris Protection –**
Optics drop down below the stage when machine is not in use. Convenient air blow-off mounted to the front of the machine for cleaning parts prior to measurement.

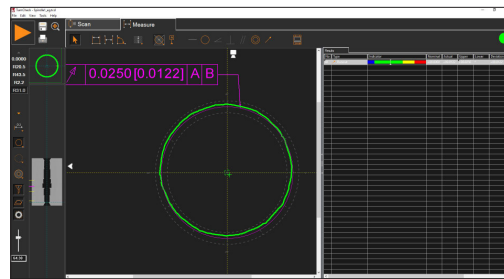
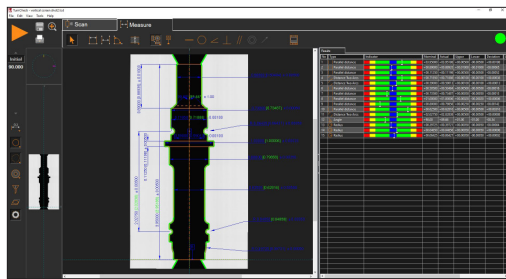
High-Performance Shaft Measuring Machine



TurnCheck 10|60 model with optional workstation shown.



TurnCheck™ Series-10

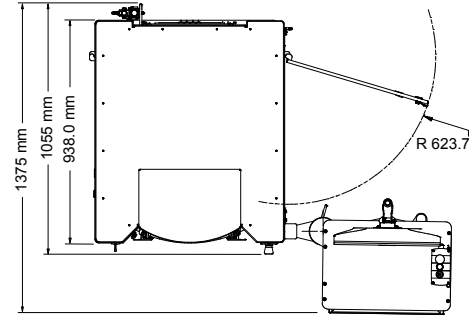
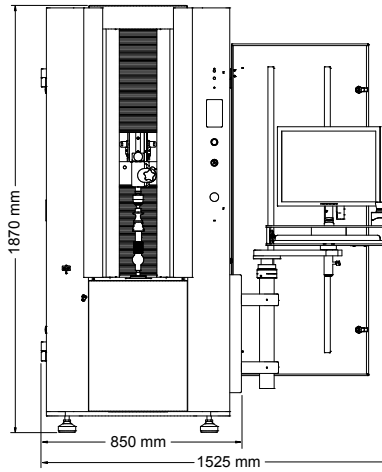


Measurement & Analysis Capabilities:

- Automatic data point generation and simple feature extraction
- Advanced image analysis technology
- Program using DXF CAD models
- True high definition of part image display
- Optional SmartProfile® software for 3D analysis and advanced GD&T

Rugged, Easy To Use Design:

- Easy loading – one-handed tailstock operation
- Built-in light curtain to safeguard the operator during automatic measurement
- Additional optional workholding kits available for parts that do not have centers



System Weight: 530 kg
Shipping Weight: 630 kg

Series-10	10 40	10 60	10 80
Measurement Capacity & Machine Size*			
Vertical Measuring Range	400 mm	600 mm	800 mm
Maximum Diameter Measuring Range	100 mm	100 mm	100 mm
Maximum Part Size	175∅ mm x 400L mm	175∅ mm x 600L mm	175∅ mm x 800L mm
Machine Size	850 mm x 1055 mm x 1870 mm	850 mm x 1055 mm x 1870 mm	850 mm x 1055 mm x 1870 mm
Machine Size with Optional Workstation	1525 mm x 1055 mm x 1870 mm	1525 mm x 1055 mm x 1870 mm	1525 mm x 1055 mm x 1870 mm
* Between standard centers.			
System Performance			
Vertical Scanning Speed	100 mm/sec		
Rotational Scanning Speed	60 RPM		
Vertical Scale Resolution	0.1 µm		
Video Edge Resolution	0.5 µm		
Rotational Scale Resolution	0.001 degrees		
Rated Spindle Load	80 kg		
Accuracy**			
Diameter Measurement	1.8 + D/100 µm		
Diameter Repeatability	1.0 µm		
Length Measurement	3.5 + L/150 µm		
Length Repeatability	3.0 µm		
Rated Environment & Facilities			
Power Requirements	100-120 VAC or 200-240 VAC, 50/60 Hz, 1-Phase, 650 W		
Compressed Air Requirements	Air supply pressure: 0.45 MPa; Minimum Flow capacity: 175 l/min; Air quality ISO 8573-1:2010 Class 4.3.4 or better		
Safe Operating Environment	15-30 °C, non-condensing		
Rated Environment	Temperature 18-22 °C; 30-80% humidity; vibration <0.001g below 15 Hz		

This equipment complies with EMC directive EN IEC 61326-1, Class A.

**Where D, L = measuring length in mm. Applies to thermally stable system in rated environment. Maximum rate of temperature change: 1 °C/hour. Maximum vertical temperature gradient: 1 °C/meter. Applies to a work piece with its center of mass located on the spindle axis.



World Headquarters: Rochester, NY, USA • 585.544.0400 • www.ogpnet.com

OGP Shanghai Co, Ltd: Shanghai, China

86.21.5045.8383/8989 • www.smartscope.com.cn

OGP Messtechnik GmbH: Hofheim-Wallau, Germany

49.6122.9968.0 • www.ogpmesstechnik.de

Optical Gaging (S) Pte Ltd: Singapore • 65.6741.8880 • www.smartscope.com.sg

© 2023 Quality Vision International Inc. Specifications subject to change without notice. All rights reserved. Trademarks are the properties of their respective owners.

Export of this product is controlled under U.S. Export Regulations. An Export License may be required for deliveries or re-export outside the United States. Part Number 794184-0523