



TurnCheck™ Series-6

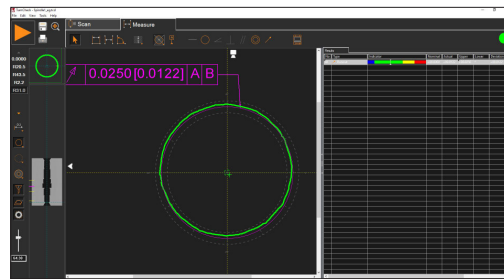
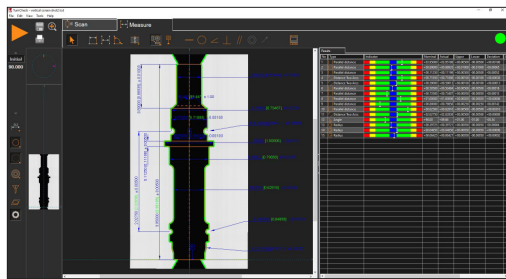
TurnCheck™ Series-6 systems are precision optical shaft measuring instruments designed for shop floor environments. Rugged and reliable, TurnCheck Series-6 has a completely telecentric, large field of view optical system that accommodates parts with shaft diameters up to 60 mm.

- **Measure Within Seconds** – Shaft lengths up to 300 mm.
- **Collimated LED illumination** – Reduces distortion to provide superior image quality and improved measurement of critical dimensions of all feature types.
- **Built-in Thread Library** – Optional $\pm 12.5^\circ$ of motorized helix angle that automatically adjusts based on thread value.

High-Performance Benchtop Shaft Measurement System



TurnCheck™ Series-6

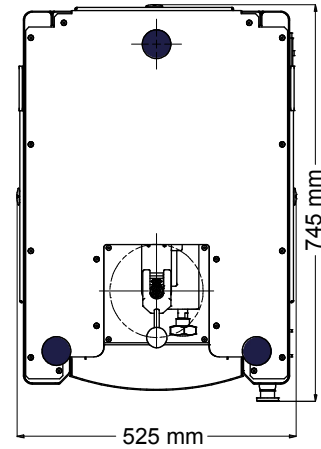
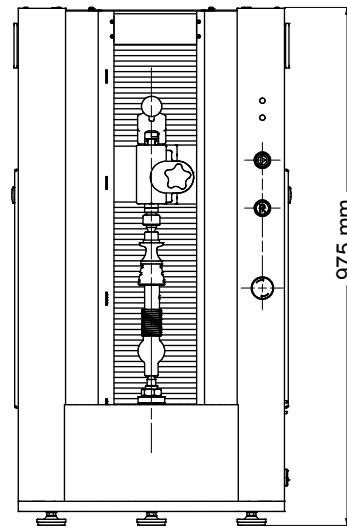


Measurement & Analysis Capabilities:

- Automatic data point generation and simple feature extraction
- Advanced image analysis technology
- Program using DXF CAD models
- True high definition of part image display
- Optional SmartProfile® software for 3D analysis and advanced GD&T

Rugged, Easy To Use Design:

- Easy loading – one-handed tailstock operation
- Built-in light curtain to safeguard the operator during automatic measurement
- Additional optional workholding kits available for parts that do not have centers



System Weight: 150 kg
Shipping Weight: 200 kg

Series-6	6 30
Measurement Capacity & Machine Size*	
Vertical Measuring Range	300 mm
Maximum Diameter Measuring Range	60 mm
Maximum Part Size	170∅ mm x 300L mm
Machine Size	525 mm x 745 mm x 975 mm
* Between standard centers.	
System Performance	
Rotational Scanning Speed	60 RPM
Vertical Scale Resolution	0.1 µm
Video Edge Resolution	0.5 µm
Rotational Scale Resolution	0.001 degrees
Rated Spindle Load	20 kg
Motorized Helix Angle Adjustment (optional)	±12.5 degrees
Accuracy**	
Diameter Measurement	1.8 + D/100 µm
Diameter Repeatability	1.0 µm
Length Measurement	3.5 + L/150 µm
Length Repeatability	3.0 µm
Rated Environment & Facilities	
Power Requirements	100-120 VAC or 200-240 VAC, 50/60 Hz, 1-Phase, 650 W
Safe Operating Environment	15-30 °C, non-condensing
Rated Environment	Temperature 18-22 °C; 30-80% humidity; vibration <0.001g below 15 Hz

This equipment complies with EMC directive EN IEC 61326-1, Class A.

**Where D, L = measuring length in mm. Applies to thermally stable system in rated environment. Maximum rate of temperature change: 1 °C/hour. Maximum vertical temperature gradient: 1 °C/meter. Applies to a work piece with its center of mass located on the spindle axis.



World Headquarters: Rochester, NY, USA • 585.544.0400 • www.ogpnet.com

OGP Shanghai Co, Ltd: Shanghai, China
86.21.5045.8383/8989 • www.smartscope.com.cn

OGP Messtechnik GmbH: Hofheim-Wallau, Germany
49.6122.9968.0 • www.ogpmesstechnik.de

Optical Gaging (S) Pte Ltd: Singapore • 65.6741.8880 • www.smartscope.com.sg